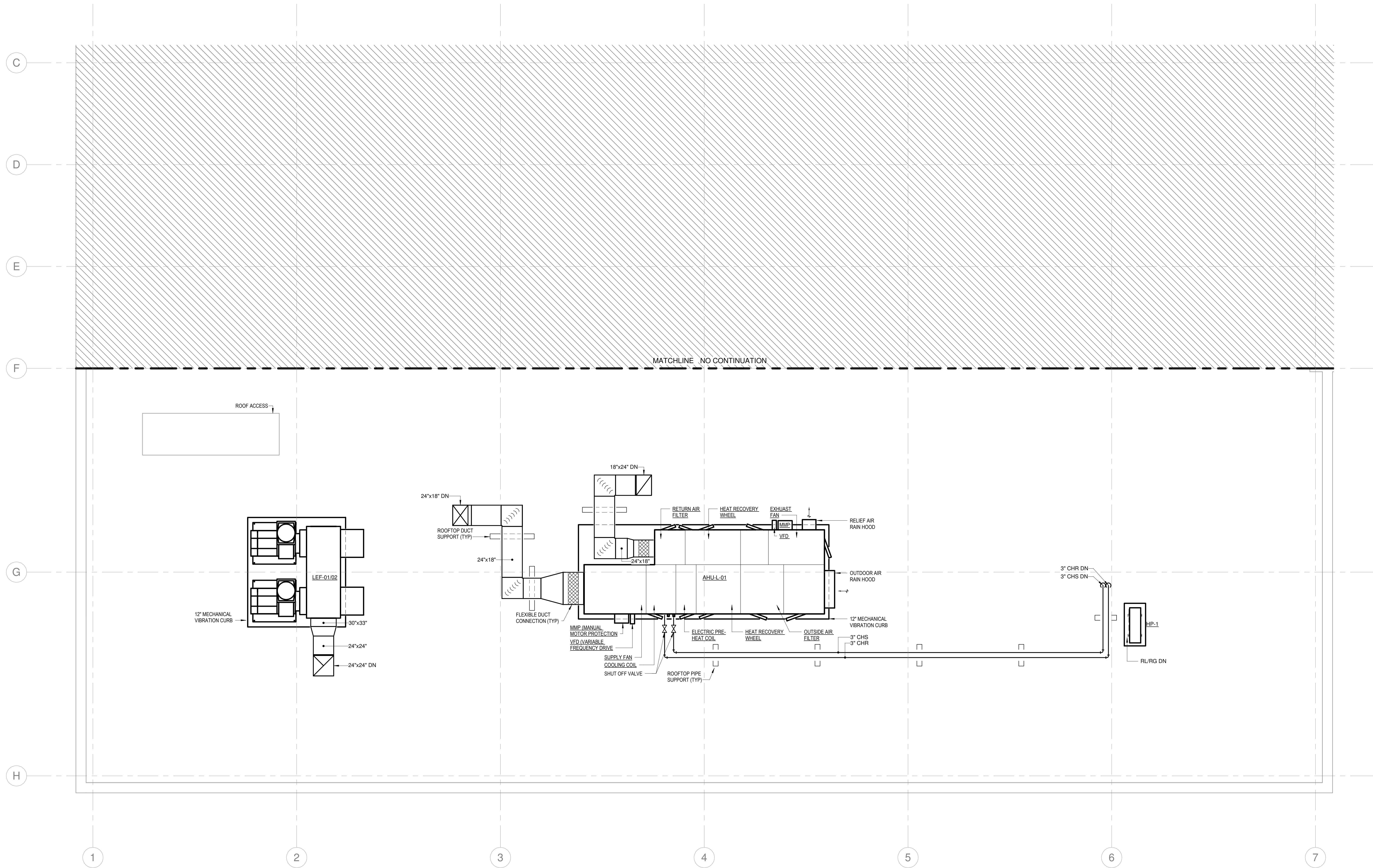


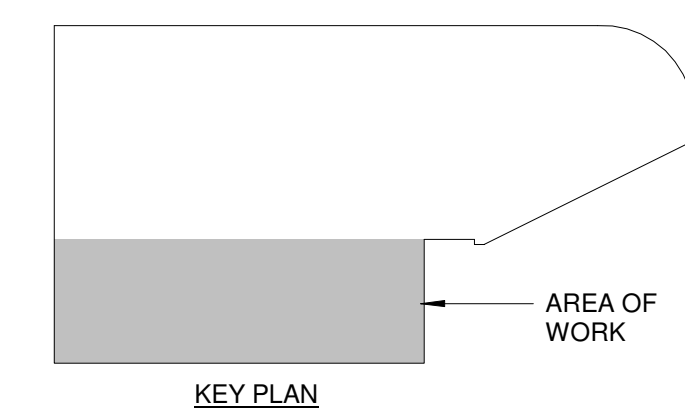
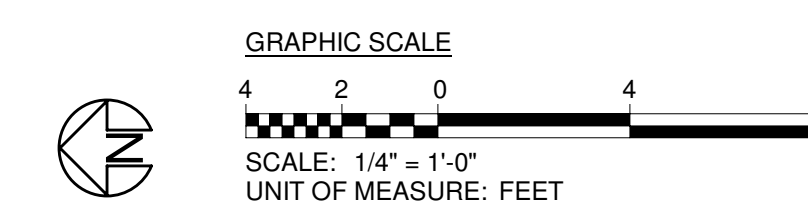
GENERAL NOTES

1. DRAWING ISSUED FOR AHU-L-01 PURCHASE ORDER ONLY. ALL OTHER INFORMATION IS NOT FOR CONSTRUCTION.



ROOF - DUCTWORK - NEW WORK
SCALE: 1/4" = 1'-0"

AHU-L-01 PURCHASE ORDER
NOT FOR CONSTRUCTION



QUACKENBUSH ARCHITECTS + PLANNERS
 1217 HAMPTON | COLUMBIA, SC | 803.771.2899 | quackenbusharchitects.com
 NOT FOR CONSTRUCTION
 PROJECT TITLE
FULP HALL 5TH FLOOR CLASSROOM RENOVATION
 TRI COUNTY TECHNICAL COLLEGE
 7900 US-76, FENDELETON, SC 29520
 CONDITIONS OF USE:
 THIS DRAWING AND THE DESIGN THEREON ARE THE PROPERTY OF QUACKENBUSH ARCHITECTS + PLANNERS. THE REPRODUCTION, COPYING, OR USE OF THIS DRAWING WITHOUT WRITTEN CONSENT OF QUACKENBUSH ARCHITECTS + PLANNERS IS PROHIBITED AND ANY INFRINGEMENT WILL BE SUBJECT TO LEGAL ACTION.
 COPYRIGHT © 2019 QUACKENBUSH ARCHITECTS + PLANNERS
 PHASE
 DESIGN DEVELOPMENT
 ISSUE DATE 11/22/2019
 PROJECT NO. 319090.B0
 REVISION DATE
 TITLE
ROOF - DUCTWORK - NEW WORK
 SHEET NO.
M-103

12/15/2019 9:40:12 AM
 C:\Reel\Projects\2019\319090.B0_MEP_10_william.shawley.rvt

GENERAL NOTES

- 1. DRAWING ISSUED FOR AHU-L01 PURCHASE ORDER ONLY. ALL OTHER INFORMATION IS NOT FOR CONSTRUCTION.

AIR HANDLING UNIT SCHEDULE

Table with columns: DESIGNATION, SERVICE, SUPPLY FAN, EXHAUST FAN, COOLING COIL, HEATING COIL, ENERGY RECOVERY WHEEL, FILTERS, ELECTRICAL, WEIGHT (LB), BASIS OF DESIGN, REMARKS.

AIR HANDLING UNIT FAN SCHEDULE

Table with columns: DESIGNATION, SERVICE, TYPE, TOTAL CFM, NO. OF FANS, TSP (IN H2O), ESP (IN H2O), FAN RPM, MOTOR BHP (PER FAN), MOTOR HP (PER FAN), DRIVE, VARIABLE FREQUENCY DRIVE, ELECTRICAL, BASIS OF DESIGN.

COOLING COIL SCHEDULE

Table with columns: DESIGNATION, SERVICE, AIRFLOW (CFM, OA CFM), EAT (°F), LAT (°F), MBH (SENSIBLE, TOTAL), GPM @ 12°F ΔT, MAXIMUM H2O PD (FT WG), MAXIMUM FACE VELOCITY (FPM), NO. OF COILS, MAX FIN SPACING (FIN/IN), MAXIMUM AIR PD (IN H2O), MAX NUMBER OF ROWS, FLUID, BASIS OF DESIGN, REMARKS.

- 1. CC-1-1 IS SIZED FOR HEAT RECOVERY WHEEL FAILURE.

HEAT RECOVERY WHEEL SCHEDULE

Table with columns: DESIGNATION, ENTHALPY WHEEL MOTOR HP, CFM (SUPPLY, EXHAUST), ENTERING AIR TEMPERATURE (SUMMER, WINTER), LEAVING AIR TEMPERATURE (SUMMER, WINTER), ELECTRICAL, BASIS OF DESIGN.

FILTER SCHEDULE

Table with columns: DESIGNATION, SERVICE, APPROXIMATE BANK DIMENSIONS (IN) (WxHxD), NUMBER OF CARTRIDGES, CARTRIDGE SIZE (IN) (WxHxD), CFM, MAX FACE VELOCITY (FPM), MEDIA AREA PER CARTRIDGE (SQ FT), MAXIMUM INITIAL PD @ 500 FPM (IN H2O), MERV RATING, REMARKS.

EXISTING VAV SCHEDULE

Table with columns: DESIGNATION, AIRFLOW (CFM) (COOLING, HEATING), UNOCCUPIED, INLET SIZE, OUTLET SIZE, MINIMUM INLET SP (IN WG), MAXIMUM NC @ 1.0 INCH WG INLET SP, HEATING COIL PERFORMANCE (EAT (°F), LAT (°F)), COIL KW, ELECTRICAL, BASIS OF DESIGN, REMARKS.

ELECTRIC HEATING COIL SCHEDULE

Table with columns: DESIGNATION, SERVICE, AIRFLOW (CFM, OA CFM), EAT (°F), LAT (°F), MBH, BASIS OF DESIGN.

SPLIT SYSTEM AIR-CONDITIONER SCHEDULE

Table with columns: DESIG, SERVICE, INDOOR UNIT FAN SECTION (CFM, ESP, MCA, ELECTRICAL), INDOOR UNIT COIL DATA (EAT, COOLING, HEATING), OUTDOOR UNIT DATA (DESIG, COOLING, HEATING, MCA, FAN FLA, ELECTRICAL), BASIS OF DESIGN, REMARKS.

LABORATORY SUPPLY VALVE SCHEDULE

Table with columns: DESIGNATION, AIRFLOW (CFM) (COOLING, HEATING), UNOCCUPIED, INLET SIZE, OUTLET SIZE, MINIMUM INLET SP (IN WG), MAXIMUM NC @ 1.0 INCH WG INLET SP, HEATING COIL PERFORMANCE (EAT (°F), LAT (°F)), COIL KW, ELECTRICAL, BASIS OF DESIGN, REMARKS.

LABORATORY EXHAUST VALVE SCHEDULE

Table with columns: DESIGNATION, AIRFLOW (CFM) (MAX, OCCUPIED, UNOCCUPIED), INLET SIZE, OUTLET SIZE, MINIMUM INLET SP (IN WG), MAXIMUM NC @ 1.0 INCH WG INLET SP, BASIS OF DESIGN, REMARKS.

AIR DEVICE SCHEDULE

Table with columns: NUMBER, DUTY, TYPE, CFM (MIN, MAX), FACE/MODULE SIZE (IN), NOMINAL DUCT SIZE (IN), BLOW, MAX TOTAL AIR PD (IN H2O), MAX NOISE CRITERIA VALUE, BASIS OF DESIGN (MANUFACTURER, MODEL), REMARKS.

FAN SCHEDULE

Table with columns: DESIG, SERVICE, TOTAL CFM, NO. OF FANS, TSP (IN WG), ESP (IN WG), FAN RPM, MOTOR BHP, MOTOR HP, DRIVE, VARIABLE FREQUENCY DRIVE, ELECTRICAL, BASIS OF DESIGN, REMARKS.

- 1. LABORATORY HOOD EXHAUST FANS SHALL HAVE AN INTEGRAL INTAKE PLENUM. EACH FAN IS SIZED FOR THE REQUIRED CFM FOR N-1 REDUNDANCY.

DUCT CONSTRUCTION AND LEAK TEST SCHEDULE

Table with columns: DUCT SYSTEM, MAXIMUM OPERATING PRESSURE (IN WG), DUCT CONSTRUCTION (PRESSURE CLASS, POSITIVE OR NEGATIVE, SMACNA DUCT SEAL CLASS), TEST REQUIRED (YES/NO), TEST PRESSURE (IN WG), DUCT LEAK CLASS (RECTANGULAR, ROUND), REMARKS.

- 1. TEST PER SMACNA HVAC AIT DUCT LEAKAGE TEST MANUAL.
2. UPSTREAM OF SUPPLY TERMINAL UNIT (FROM AIR HANDLING UNIT TO TERMINAL UNIT).
3. DOWNSTREAM OF SUPPLY TERMINAL UNIT (FROM TERMINAL UNIT TO AIR DEVICE).
4. DUCTWORK CONNECTED TO LABORATORY EXHAUST SYSTEM.

AHU-L-01 PURCHASE ORDER NOT FOR CONSTRUCTION

BUILDING DESIGN COMMISSIONING DATA

Table with 2 columns: OUTSIDE DESIGN CONDITIONS, GENERAL BUILDING CRITERIA, GENERAL BUILDING DESIGN LOAD REQUIREMENTS, COMFORT HEATING, COMFORT COOLING, MINIMUM BUILDING POSITIVE PRESSURE, LABORATORY FUME HOOD CRITERIA, AIR CHANGE CRITERIA, OCCUPANCY SCHEDULE, DOOR TRANSFER CRITERIA, SPACE PRESSURIZATION CRITERIA, LABORATORY EXHAUST CRITERIA.

AVE. SEAL

CORPORATE SEAL

NOT FOR CONSTRUCTION

PROJECT TITLE

FULP HALL 5TH FLOOR CLASSROOM RENOVATION TRI COUNTY TECHNICAL COLLEGE

PHASE

DESIGN DEVELOPMENT

ISSUE DATE

11/22/2019

PROJECT NO.

319090.00

REVISION

DATE

TITLE

MECHANICAL SCHEDULES

SHEET NO.

M-501

QUACKENBUSH ARCHITECTS + PLANNERS 1217 HAMPTON | COLUMBIA, SC | 803.771.2899 | quackenbusharchitects.com

7900 US-76, PENNINGTON, SC 29902

12/15/2019 9:40:15 AM

C:\Bent Projects\2019\319090.00_MEP_13_williamshawley.rvt