

Manufacturing Management and Leadership

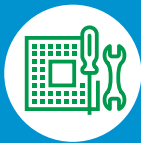


The associate's degree in Manufacturing Management and Leadership is for those wanting to advance in a current position or develop natural leadership tendencies. In addition to learning people skills for supervisory roles, students in this program also learn:

- Lean manufacturing practices
- Production scheduling
- Quality principles
- Industrial safety
- Managerial accounting

[Learn more about program requirements](#) and related certificates. Scroll to the degree program and select “display programs.”

PLUS »



Any EIT graduate can obtain this second degree in MML with only about eight more courses.



MML is the only management program on campus that has substantial coursework in Quality Assurance and Lean Manufacturing, which are in high demand with our area industries and across the nation.



New students can take 2/3 of the coursework either totally online or in a hybrid format.



The associate degree includes three embedded certificates, including Intro to Quality Assurance, Intro to Manufacturing Management, and Manufacturing and Continuous Process Improvement.

Career Outlooks and Average Salaries

CONNECT WITH US

Program Director

Stan Compton
 Telephone: (864) 646-1441
 Email: scompton@tctc.edu

Academic Resource Specialist

Brittany Talbert
 Telephone: (864) 646-1517
 Email: btalbert@tctc.edu

Division Office

(864) 646-1375
eit@tctc.edu

[TCTC.edu/APPLY](https://www.tctc.edu/APPLY)

SC Wins Eligible

Job Title	What You Do	Salary			# Job Openings
		Entry	Median	Skilled	
Industrial Production Managers	Plan, direct, or coordinate the work activities and resources necessary for manufacturing products in accordance with cost, quality, and quantity specifications.	\$68,320	\$110,806	\$164,305	140
Loss Prevention Managers	Plan and direct policies, procedures, or systems to prevent the loss of assets. Determine risk exposure or potential liability, and develop risk control measures.	\$18,793	\$53,782	\$152,701	284
Logisticians	Analyze and coordinate the logistical functions of a firm or organization. Responsible for the entire life cycle of a product, including acquisition, distribution, internal allocation, delivery, and final disposal of resources.	\$36,766	\$56,033	\$95,623	138
General and Operations Managers	Plan, direct, or coordinate the operations of public or private sector organizations. Duties and responsibilities include formulating policies, managing daily operations, and planning the use of materials and human resources, but are too diverse and general in nature to be classified in any one functional area of management or administration, such as personnel, purchasing, or administrative services.	\$32,920	\$77,697	\$194,067	1,199



I DEFY.